

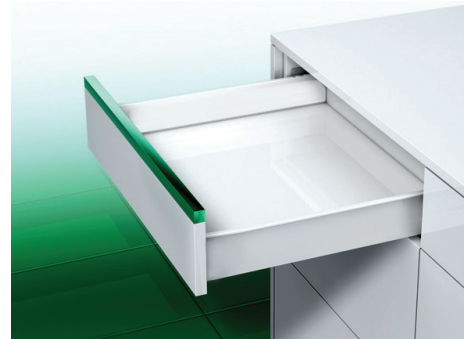
Medium duty
 100 lb load capacity
 15.5mm (5/8") side clearance
 Maximum drawer width: 36"



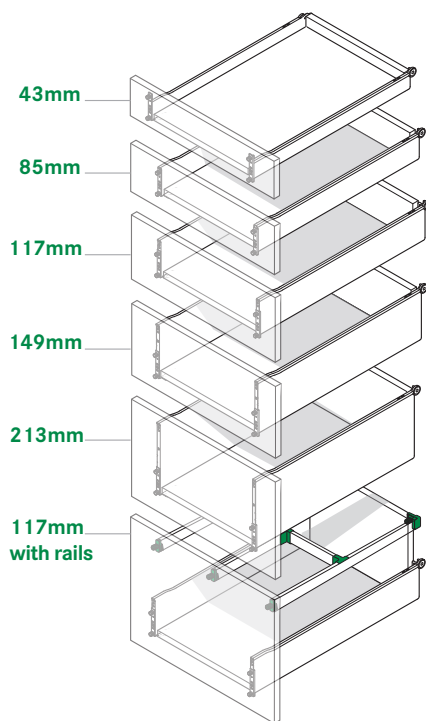
ZARGEN single wall steel drawer system provides the flexibility to please most design needs. From residential and office furniture to commercial and institutional settings, the versatile and reliable Zargen drawer system delivers superior performance. From cabinet members to full extension members to high sides to railing systems, the Zargen drawer system offers endless possibilities. Now made in the USA.

APPLICATIONS

Institutional
 Residential
 Commercial



PROFILES



SPECIFICATIONS

Product:	Single Wall Steel Drawer System
Mounting:	Side
Material:	Steel with Corrosion Resistant Finish
Hole Pattern:	32mm
Type:	Steel Drawer System
Travel:	Partial Extension
Length:	270mm (10 1/4"), 350mm (13 1/4"), 400mm (15 1/4"), 440mm (17 3/8"), 470mm (18 1/2"), 510mm (20 1/16"), 550mm (21 1/8")
Clearance:	15.5mm (5/8") on each side
Height(s):	43mm (1 11/16"), 85mm (3 3/8"), 117mm (4 5/8"), 149mm (5 7/8"), 213mm (8 3/8")
Action:	Roller Glide
Slide Configuration:	Handed
Finish:	White Epoxy Steel
Packaging:	All sizes 10 sets per corrugated carton

RATING

Load:	100 lb
Max. Drawer Width:	36"

ZARGEN meets and exceeds ANSI/BHMA A156.9 Grade 1 testing requirements

WARRANTY

Limited Lifetime Warranty

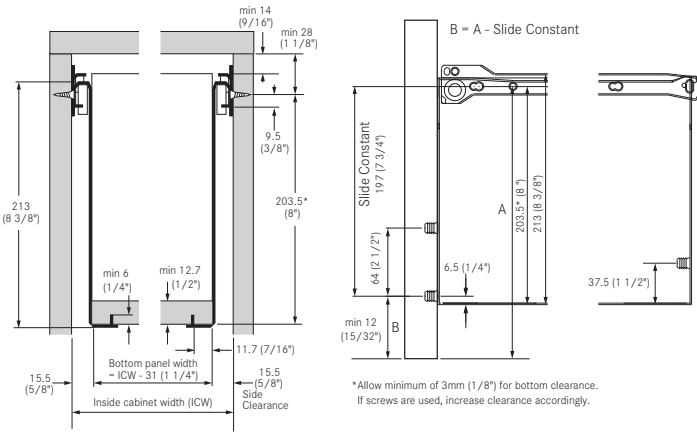
AVAILABLE OPTIONS

- Full Extension
- Soft-close Damper Set
- Interior Drawers
- Railing Systems
- Pendaflex File Railing
- Assembly Machinery and Mounting Accessory Items

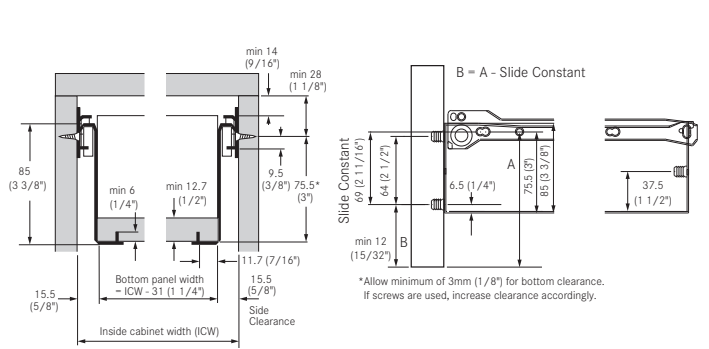


DRAWER INSTALLATION DIMENSIONS

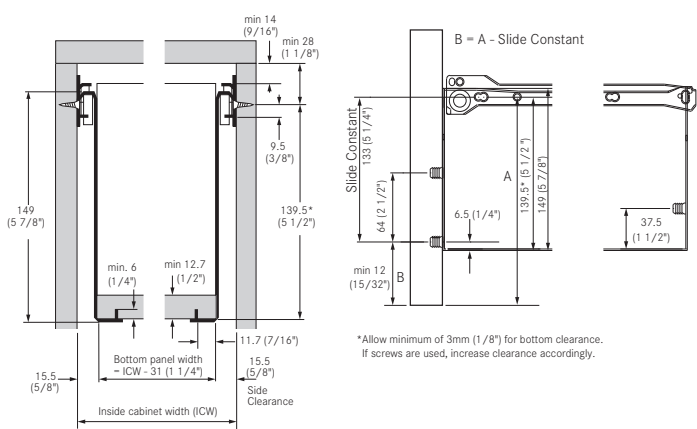
213mm (8 3/8") Side Height



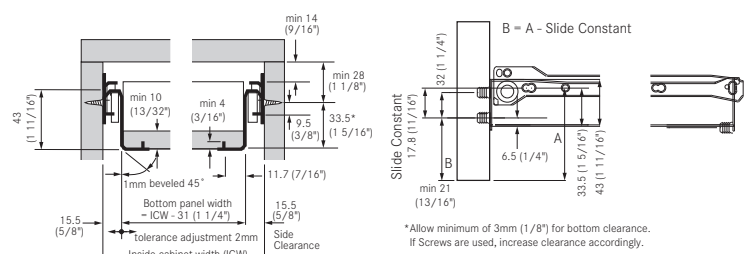
85mm (3 3/8") Side Height



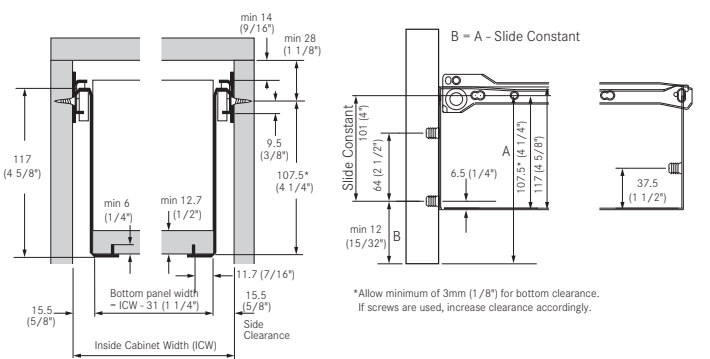
149mm (5 7/8") Side Height



43mm (1 11/16") Side Height



117mm (4 5/8") Side Height



CABINET MEMBER

